

SHOP ESSENTIALS PROMOTION!

ATB100 PORTABLE TOOL BOXES WITH METAL TOOL TRAY

- Durable steel construction
- Heavy-plated latches
- Inner trays in regular hand boxes
- High gloss powder coat paint finish
- Colour: Red
- Unit Capacity: 50 lbs.



TEP336

aurora tools

Model No.	D"		Dimensions			Promo Price
		x	W"	x	H"	
TEP336	8-3/4	x	21	x	9	55.75
TEP516	6	x	16	x	6-1/2	33.75

SALT & SAND CONTAINERS

- Waterproof and lockable which makes it ideal for many other outdoor storage uses aside from storing loose or bagged salt, sand, or ice melter
- It can also hold garden supplies, sporting goods, pool supplies, tools, garbage/recyclables, or anything else you want to safely store
- Constructed of rugged BPA-free UV-resistant polyethylene
- Built-in pockets for forklifts allow the bins to be moved without emptying them
- Capacity: 4.24 cu. ft.
- 21" L x 27" W x 26" H



NO615



NO614

Model No.	Colour	Promo Price
NO614	Yellow	156.00
NO615	Grey	156.00



HOTSPOTTER ALL-PURPOSE PROPANE TORCH KIT

- Works off the pressure of a propane tank, no regulator required
- Heavy-duty kit with durable cast iron and steel nozzle
- 500000 BTU rating
- Ideal for a wide variety of all-season maintenance/repair applications
- Includes: 10' neoprene hose, striker and on/off valve



Model No.	MFG No.	Promo Price
312-4904	WB-101	110.00

41-PC. 1/4" & 3/8" DRIVE S.A.E./METRIC SOCKET SET

- Ratchet features a quick-release button
 - Laser-marked, 6-point sockets
 - Includes: 35 chrome vanadium steel standard sockets and six accessories



aurora tools

Model No.	Promo Price
TLV360	69.95

Pricing in effect until December 31, 2021 or while quantities last. Taxes and freight extra. Issue #SDW221102NA

Due to recent commodity and market volatility, prices are subject to change, and may vary without prior notice.

POLY SNOW SHOVELS

- Blade Material: Polypropylene
- Handle Material: Steel
- Handle Type: D-Grip



NM809

aurora tools

Model No.	Wearstrip	Blade Dim. W" x H"	Overall Length"	Promo Price
NM809	Included	19-3/4 x 13-1/8	50-3/4	30.25
NM810	Not Included	19-3/4 x 13	51-3/8	29.50

SNOW ROOF RAKE

- Ideal for removing any kind of debris from roofs
- Prevents roof damage by removing ice dams & heavy snow
- Shipped knocked down
- Lightweight handle extends to 16'
- Blade Material: Polypropylene
- Blade Height: 6"
- Blade Width: 24-3/4"
- Handle Length: 61"
- Handle Material: Aluminum
- Handle Type: Straight



aurora tools

Model No.	Promo Price
NN009	51.99

SCRAPERS

- Top-of-the-line industrial grade tools designed for intense and continuous use
- Handle Material: Ashwood
- Handle Type: Straight
- Handle Length: 48"
- Blade Material: Tempered steel



Model No.	MFG No.	Series	Blade"	Promo Price
ND067	NHSW7	NordicTM	7 x 5-1/2	22.95
ND040	AFSW7	AlpineTM	7 x 6	44.95
ND115	YFSW9	YukonTM	8-1/2 x 6-1/4	54.95

POLY SNOW PUSHERS

- Powder-coated steel handle for added strength
- Ergonomic poly D-grip
- Blade Material: Polypropylene



NM811

aurora tools

Model No.	Wearstrip	Blade Dim. W" x H"	Overall Length"	Promo Price
NM812	Included	21-1/4 x 9-1/4	50-1/2	24.99
NM811	Not Included	24-1/2 x 10-3/4	54-1/2	30.99

SLEIGH SNOW SHOVELS

- Top-of-the-line industrial grade tools designed for intense and continuous use
- Handle type: Tubular



ND307



NJ233



Model No.	MFG No.	Blade"	Handle Length"	Promo Price
STEEL HANDLE W/STEEL WEAR STRIP				
ND307*	APSS22	23-1/2 x 27-3/4	56	57.95
NE299	EPSS24	23-1/2 x 30-1/2	42-1/2	69.95
ALUMINUM HANDLE				
NJ233	YEPG424	25-3/4 x 8	56	49.95

* Ergonomic handle

ALPINE™ ALL-PURPOSE SQUARE POINT SHOVEL

- Top-of-the-line industrial grade tools designed for intense and continuous use
- Blade Size: 13-3/4" x 11-1/4"
- Blade Material: Steel
- Handle Material: Ashwood
- Handle Type: D-Grip
- Handle Length: 34-3/4"



Model No.	MFG No.	Promo Price
ND973	AS112D	28.50



BROADCAST SPREADERS

- Steel tube frame construction with chrome plated hardware
- Heavy-duty nylon gear box increases product life span
- Setting control on handle for precise adjustments
- Includes: Raincover, screen
- 12" x 4" pneumatic tires
- Spread Width: 10'-12'

NN137

NJ142

aurora tools

Model No.	Load Capacity lbs.	Coverage sq. ft	Promo Price
NN137	50	11 000	182.00
NJ142	100	22 000	269.00

FIRESTORM™ INTENSE ICE MELTER

- Prevents refreezing even under the most challenging conditions
- Safe for children and pets, will not burn skin and gentle on vegetation
- Distinctive orange colour is easy to see, allowing you to use less while ensuring safety for pedestrians
- Container Size: 44 lbs. (20 kg)
- Melting Point: -32°C (-25°F)



Model No.	MFG No.	Promo Price
JB597	F0042B	25.95

PREMIUM ECO-FRIENDLY DE-ICER

- Enhanced with MCi3 for safe and optimum performance
- Ideal for spreading
- Gentle on vegetation
- Safer for concrete, asphalt, sidewalks and pavers
- Container Size: 50 lbs.(22.7 kg)

meltco



Model No.	MFG No.	Promo Price
NO413	8409055	18.89

BROADCAST SPREADERS WITH STAINLESS STEEL HARDWARE

- Metal gear inside of the gear box
- Stainless steel hardware in the hopper and pivot shaft
- Metal control handle
- Rate setting control on handle for precise adjustments
- Easy three-step assembly
- Spread Width: 10'-12'
- Includes: Raincover, screen

aurora tools



NN139



NN138

Model No.	Load Capacity lbs.	Coverage sq. ft	Tire Size"	Promo Price
NN138	70	15 000	10	269.00
NN139	125	27 000	14	419.00

HEAVY-DUTY OUTDOOR STORAGE CONTAINERS

- Thick-walled, durable polyethylene construction
- Double-walled reinforced lid
- Molded forklift channels and recessed hand holes
 - Capacity: 5.5 cu. Ft.
 - 30" L x 24" W x 24" H



ND337



ND202

Model No.	Colour	Promo Price
ND337	Yellow	169.00
ND202	Grey	169.00

SALT & SAND SCOOPS

- Polyethylene scoop ideal for salt and sand, compost and animal feed
- Capacity: 1 gallon



PE095



PE096

Model No.	Colour	Promo Price
PE095	Yellow	18.95
PE096	White	18.95

VANGARD GENERAL PURPOSE GERMICIDAL CLEANER

- Cleans, disinfects and deodorizes in one labour-saving step
- Highly efficient in destroying a broad range of bacteria, viruses, fungi and other microorganisms from hard surfaces
- Effectively inhibits the growth of odour-causing mold and mildew
- This product is part of Health Canada's list of hard-surface disinfectants with evidence against COVID-19
- Container Size: 5 L
- Container Type: Jug
- DIN: 02213109



Model No.	MFG No.	Promo Price
JH310	53023	27.95

JN127



MEAN GREEN® SUPER STRENGTH MULTI-PURPOSE CLEANER

- Powerful, multi-purpose cleaner and degreaser that can get grease out and eliminate grime from most surfaces

JN126



Model No.	MFG No.	Container Type	Container Size	Promo Price
JN126	136FE	Trigger Bottle	946 ml	5.99
JN127	196FE	Jug	2.84 L	9.49

PREMIUM FACIAL TISSUE

- Premium quality, tissues are dispensed one at a time to improve personal hygiene
- Sheet Width: 8.4"
- Sheet Length: 7.4"
- Ply: 2
- Sheets/Box: 100
- Boxes/Case: 30

SnowSoft™



Model No.	MFG No.	Promo Price
JO166	F10030	24.49/Case

PINK LOTION HAND SOAP

- Leaves hands smelling baby fresh, soft and clean
- Biodegradable, phosphate free
- Accepted for use in Canadian food processing facilities
- Type: Liquid
- Container Type: Jug
- Net Volume: 4 L
- Fragrance: Scented



Model No.	Promo Price
NI343	9.50

ORANGE HAND CLEANER

- High quality pump included with every bottle for controlled dispensing
 - Fresh, natural orange citrus scent
- Quick and easy removal of dirt, grease, paint, ink, epoxy, tar, rust and most industrial soils
- Can conveniently be used with or without water
 - Accepted for use in Canadian food processing facilities
 - 4 L jug
- Type: Cream



Model No.	Promo Price
JL018	22.50

PRO SELECT™ ROLL HAND TOWELS

- Long-lasting rolls minimize maintenance costs while maximizing service
- Embossing enhances hand feel and maximizes absorbency; fewer towels are used per hand dry
- Made from 100% recycled fibres, with a minimum of 50% post-consumer material and are certified Green Seal®
- Provide a level of quality that meets everyday needs
- Ply: 1
- Roll Type: Standard
- Roll Length: 425'
- Width: 8"
- Rolls/Case: 12

JC102

JC029



Cascades PRO
Select®

Model No.	MFG No.	Colour	Promo Price
JC029	H245	Natural	37.95/Case
JC030	H240	White	42.50/Case
MANUAL DISPENSER			
JC102	DH37	Black	77.50

INDUSTRIAL GARBAGE BAGS

- Excellent strength and puncture resistance eliminates the need for double bagging
- Excellent performance when compared to standard in the category
- RMP® garbage bags are certified UL Ecologo® by a well recognized Canadian third party certification body
- UL Ecologo® certified bags are less harmful for the environment
- Length: 50"
- Width: 35"
- Colour: Black
- Material: Recycled Material
- Type: Open Top



JM684

Model No.	Strength	Thickness mils	Qty /Pkg.	Promo Price
JM683	2X Strong	1.9	75	26.99
JM684	3X Strong	3.0	50	28.99

BI-LEVEL BOOT BRUSH

- Features stainless steel mounting bracket
- Stiff yellow brush fiber
- Overall Length: 12"
- Bristle Colour: Yellow



Model No.	MFG No.	Promo Price
JN089	BB-410	84.95

BRUTE® ROLL OUT CONTAINER

- Containers are made of durable polyethylene that will not chip, crack or peel
- Hinged lids remain attached and locked for efficient handling
- One-piece body construction provides superior durability and strength
- Steel catch bar is compatible with semi-automated lift systems
- Capacity: 65 US gal.
- Height: 41.8"
- Length: 25"
- Width: 32.3"
- Colour: Grey



Model No.	MFG No.	Promo Price
NI485	FG9W2100GRAY	209.00

SHOP TOWEL

- Material: Cotton
- Colour: White
- Weight: 6.35 lbs.
- Dimensions: 13" x 13"
- Pack of 100



Model No.	MFG No.	Promo Price
JN605	RSTW-100C	38.95/Pkg.

SYNRAY™ WET FLOOR MOP

- Four ply rayon
- Four rows of stitching on head band
- Absorbs 5 times its weight
- No presoak break-in required
- Type: General Use
- Style: Cut
- Material: Polyester/Rayon
- Head Band Coating: PVC
- Band Width: Narrow



JN055

JM874

Model No.	MFG No.	Mop Weight	Promo Price
JM874	MW-SC20	20 oz.	6.29
JM875	MW-SC24	24 oz.	6.99
JN103	MW-SC32	32 oz.	9.19
60" FIBREGLASS MOP HANDLE			
JN055	HW-7000F-BL	-	17.49

JUMBO SMOOTH SWEEP ANGLE BROOM

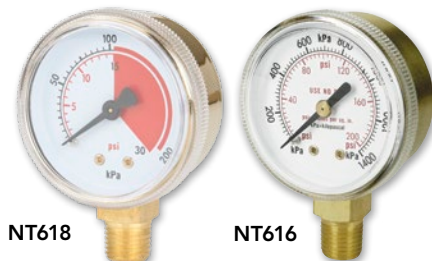
- Ideal for cleaning hard to reach areas
- Bristles are long-lasting and stain-resistant
- Permanent fusion set bristles won't pull out
- 10-in. sweep face ideal for general purpose cleaning and sweeping
- Overall Length: 56-7/8"
- Block Length: 11-7/8"
- Colour: Black



Model No.	MFG No.	Promo Price
JD647	FG638906BLA	15.49

BRASS GAUGES

- Brass casing
- Lexan™ cover lens
- 1/4" NPT inlet
- Connection: Bottom Mount
- Dial Type: Analogue



NT618

NT616

Model No.	Dial Diameter"	Pressure Range	Promo Price
NT616	2	100 psi	9.99
NT618	2	30 psi I – Red line	9.99
NT619	2	400 psi	9.99
NT620	2	4000 psi	11.49
NT622	2-1/2	200 psi	11.49
NT623	2-1/2	30 psi I – Red line	11.49
NT624	2-1/2	400 psi	11.49
NT625	2-1/2	4000 psi	11.49

SILVER HEAVY-DUTY WELDING & CUTTING OUTFIT

- Can weld up to 1/2" and cut up to 3/4"
- Ideal for industrial and commercial applications
 - Victor® Cutskill® compatible
- Comes in environmentally-friendly packaging for easy transportation
- Includes: Torch handle with check valve ; Cutting attachment ; Oxygen/acetylene regulators with 2 1/2" double-scale gauges ; Cutting tip #1 ; Welding nozzle #2 ; T-Grade 17.5' twin hose ; Goggles ; Striker
 - Style: Victor® Equivalent
 - Cuts To: 3/4"
 - Welds To: 1/2"



Model No.	MFG No.	Promo Price
TTV022	7130	579.00

AUTO-IGNITE HAND TORCH

- High output swirl flame
- Use with Propane or MAPP®
- Durable cast iron construction
- Precise flame adjustment
- Flame Type: Swirl
- Gas Type: Air Propane
- Replacement Tip End: 4TPESL
- CGA600 inlet connection



Model No.	MFG No.	Promo Price
333-9120750400	8Q-44TPSP	162.00

TIP DRILL KIT

- Cleans cutting tips and a variety of other fuel orifices and injectors
 - Includes 12 drills in sizes 52-74
- Promotes more effective fuel use and increases performance in welding, cutting and heating tips
- Drills store neatly in pipe vise handle



Model No.	Promo Price
NT660	7.95

4 IN 1 CUTTING ATTACHMENT

- Converts any standard torch into an accurate convenient multi-use tool
- Cut perfect circles up to 25" in diameter
- Make precision straight edge and end cuts
 - Adjustable guide wheels provide a steady base making it easy to follow irregular patterns and odd cuts



Model No.	MFG No.	Promo Price
TTV221	4N1	29.95

PROPANE REGULATOR

- High pressure industrial/commercial regulator
- Vapour service with portable torches or construction heaters
- Rated for approximately 2 000 000 BTU
- Includes fittings: 0 – 60 PSIG
- Hose sold separately



Model No.	Promo Price
TTV219	52.95

PROPANE HOSES

- For use with propane regulator
- Quality flexible hose
- 350 PSI rating
- CGA approved



Model No.	Length'	Promo Price
722-1010	10	29.95
722-1040	25	63.95

GAS CYLINDER POLY-STAND

- Free-standing design maximizes floor space
- Made of polyethylene resisting sparking, rust and corrosion
- Prevents accidental tipping with durable nylon straps to keep cylinders and stand secure
- Ideal for inexpensive wall-mounted storage
 - Accommodates two cylinders with diameters of 3" to 12 3/8" diameter
 - Handling capacity of 400 lbs.
 - Colour: Yellow
 - OSHA 29 CFR.1910 approved
 - Height: 30"
 - Width: 28"
 - Depth: 14"
 - Cylinder Capacity: 2



Model No.	MFG No.	Promo Price
SE966	7212-YE	249.00

UNIVERSAL MODULAR CYLINDER BRACKET

- Units link together to customize the amount of cylinders needed
- Attaches to any wall securely and easily
 - Accommodates 3" to 10" diameter cylinders
 - Yellow polyethylene
- OSHA 29 CFR.1910 approved
 - 15.3" W x 3.3" D x 6.3" H



Model No.	MFG No.	Promo Price
SED115	7216-YE	25.95

SAFETUBE® ROD CANISTERS

- Protects electrodes from dirt, grease and moisture
- Pressure fitted O-ring provides a watertight seal
- Withstands electrodes heated to 250°F
- Requires only a quarter turn to remove cap



382-4010

TTV109



Model No.	MFG No.	Capacity	Promo Price
382-4010	1205441	Up to 10 lbs. of 14" Electrodes	11.25
382-4040	1205455	Up to 15 lbs. of 18" Electrodes	16.95
TTV109	1205488	Up to 15 lbs. of 36" TIG Rods	28.95

HOSE REPAIR KIT

- Special B-size kit offers 12 different items most frequently used for hose repair
- Kit with C-5 crimp tool for 3/16" x 1/4" I.D. hose
- Tough polyethylene case includes handy chart that identifies and describes fittings in each compartment.
- **Includes:** Hose nuts & nipples Splicers Couplers Ferrules Crimping tool
- Material: Brass



Model No.	MFG No.	Promo Price
NP497	CK-24	107.00

QUICK-CONNECT SETS

- For welding, cutting, brazing and plasma applications
- Durable solid brass construction
 - Pressure up to 125 PSI
 - B-size, 9/16"-18 UNF thread with reverse flow check valves

312-4276

312-4280

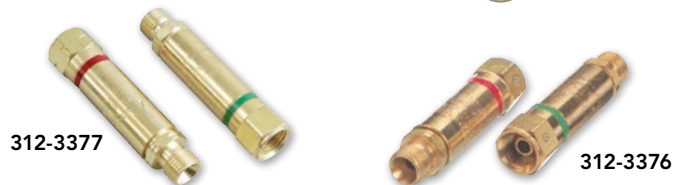
312-4284



Model No.	MFG No.	Description	Promo Price
312-4276	QDB10	Torch-to-Hose	64.50
312-4280	QDB20	Hose-to-Hose	67.75
312-4284	QDB30	Regulator-to-Hose	54.50

FLASHBACK ARRESTORS

- Color-coded for gas service to provide added safety - oxygen (green), fuel gas (red)
- Internal check valves designed to prevent reverse flow and accidental mixing of oxygen and fuel gases
- Maximum operating pressures are 15 PSIG for acetylene, 22 PSIG for other fuel gases and 125 PSIG for oxygen
- Rated capacity of 40 SCFH with a 5 PSIG pressure drop
- 10" maximum cutting capacity
- UL listed and 100% tested



Model No.	MFG No.	Connection Type	Components	Promo Price
312-3376	FA-10	Torch	FA-100P, FA-200P	63.25
312-3377	FA-30	Regulator Adaptor	FA-130P, FA-230P	68.95

Z1100 SERIES WELDING SAFETY GOGGLES

- Can be used over most prescription eyewear
- Wrap-around style provides excellent 180° panoramic vision
- Extremely flexible soft PVC goggle body for greater comfort
- Impact resistant polycarbonate lens
- Ventilation Type: Indirect
- Standard(s) Met: ANSI Z87+/CSA Z94.3
- Lens Coating: Anti-Fog
- Band Type: Elastic

SGR808



ZENITH
Safety Products

Model No.	Lens Tint	Promo Price
SGR808	3.0	11.75
SGR809	5.0	13.95

WH10 PASSIVE WELDING HELMETS

- Narrow shell design is perfect for work in tight space
- Extended front increases throat protection against sparks, slag and other physical hazards
- Comes standard with cover plate and shade 10 polycarbonate filter plate
- Meets ANSI standard Z87.1 and compliant with CSA standard Z94.3
- Colour: Black



SD617



PB193

JACKSON
SAFETY Helm

Model No.	MFG No.	Description	Promo Price
SD617	14975	HSL-100 Helmet, 4 1/2" x 5 1/4", Fixed Front	52.50
PB193	14982	HSL-2 Helmet, 2" x 4 1/4", Flip Front	60.25

LAVA BROWN LEATHER WAIST APRON

- Designed to allow even weight distribution on the user to reduce fatigue
- Heat and flame-resistant leather is made from durable side split cowhide
- Electrical insulated snaps
- 24" long



WELD-MATE

Model No.	Promo Price
TTU392	35.25

LAVA BROWN LEATHER SPATS

- Heat and flame-resistant leather is made from durable side split cowhide
- Designed to allow even weight distribution on the user to reduce fatigue



TTU390

WELD-MATE

Model No.	Length"	Promo Price
TTU390	6	28.25/Pair
TTU391	14	63.25/Pair

COMFOFLEX™ PREMIUM QUALITY WELDING GLOVES

- Heat and flame resistant shoulder split cowhide leather
- Fully sock lined for added comfort
 - Kevlar® stitched welted seams
- 13-1/2" long with reinforced thumb
 - Thumb Style: Straight
 - Cut Pattern: Gunn



WELD-MATE

Model No.	Size	Promo Price
610-0328	Large	11.50/Pair

LAVA BROWN LEATHER BIB APRONS

- Heat and flame-resistant leather is made from durable side split cowhide
- Designed to allow even weight distribution on the user to reduce fatigue
- Sewn with Kevlar thread
- Electrical insulated snaps
- Certification: EN ISO 11611:2015 Class 2/A1+A2



TTU393

WELD-MATE

Model No.	Size	Promo Price
TTU393	36" L	53.75
TTU394	42" L	59.25
TTU395	48" L	69.50

ANTI-SLIP ICE CLEATS

- Special non-slip studs offer excellent traction on ice and snow
- Non-slip flexible ice cleats
- Includes 10 durable spikes
- Made from thermoplastic elastomer
- Flexible up to -40°C
- Traction Material: Steel
- Traction Type: Stud

Boot Not Included



Model No.	Size	Fits Shoe Size	Promo Price
SEA004	Medium	5-8	12.95/Pair
SEA005	Large	8-11	12.95/Pair
SEA006	X-Large	11-13	12.95/Pair

ANTI-SLIP SPARK-PROOF ICE CLEATS

- Non-slip studs offer excellent traction on ice and snow
- Includes 10 durable brass spikes
- Made from thermoplastic elastomer
- Flexible up to -40°C
- Non-slip, heavy-duty, flexible rubber boot
- Traction Material: Brass
- Traction Type: Stud

Boot Not Included



Model No.	Size	Fits Shoe Size	Promo Price
SGO246	Medium	5-8	18.70/Pair
SGO247	Large	8-11	18.70/Pair
SGO248	X-Large	11-13	18.70/Pair

HEAVY-DUTY ANTI-SLIP ICE CLEATS

- Hexagonal, non-slip studs offer excellent traction on ice and snow
- Non-slip heavy duty flexible rubber boot
- Includes 12 durable spikes
- Made from thermoplastic elastomer
- Flexible up to -40°C
- Traction Material: Steel
- Traction Type: Stud



Model No.	Size	Fits Shoe Size	Promo Price
SDN085	Medium	5-8	16.95/Pair
SDN086	Large	8-11	16.95/Pair
SDN087	X-Large	11-13	16.95/Pair

Z2800 SERIES SAFETY GLASSES

- Frameless sporty design with extended wraparound coverage
- Scratch-resistant polycarbonate lens with UV protection
- Flexible temple design for added durability
- Near total seal of the eye provides superior protection
- Distortion-free
- Standard(s) Met: ANSI Z87+/CSA Z94.3



SGI623



SGI622



Model No.	Lens Tint	Frame	Promo Price
SGI622	Clear	Clear	1.69
SGI623	Smoke	Black	1.89
SGI624	Clear, Anti-Fog	Clear	2.19

HPPE FOAM NITRILE COATED GLOVES

- Stretchable seamless liner
- HPPE (high performance polyethylene) liner is an extremely strong fibre
- Breathable foam nitrile palm coating
- Excellent abrasion and tear resistance
- Elastic knit wrist
- Provides a superior grip
- Gauge: 13
- Cut Resistance: ANSI/ISEA 105 Level 2/EN 388 Level 3
- EN 388 Performance Levels: 4342



Model No.	Size	Promo Price
SFU852	Small (7)	4.35/Pair
SFU853	Medium (8)	4.35/Pair
SFU854	Large (9)	4.35/Pair
SFU855	X-Large (10)	4.35/Pair
SFU856	2X-Large (11)	4.35/Pair



BIONIC™ SHIELDS

- Lightweight and balanced, ergonomic design for extended use
- Extended chin and top-of-head protection
- Enhanced protection from airborne debris
- Excellent optics and increased visibility
- Height: 8-1/2"
- Width: 16-1/2"
- Thickness: 0.06"
- Material: Polycarbonate
- Shield Tint: Clear
- Suspension Type: Ratchet
- Standard(s) Met: CSA Z94.3



SAK422



Model No.	MFG No.	Description	Promo Price
BIONIC™ SHIELDS			
SAK421	S8500	Uncoated	32.00
SAK422	S8510	Anti-fog hardcoat	48.00
REPLACEMENT FACESHIELDS			
SAK423	S8550	Clear uncoated	7.07
SAK424	S8555	Clear anti-fog hardcoat	24.75
SAK425	S8560	Shade 3.0, uncoated	24.75
SAK426	S8565	Shade 5.0, uncoated	29.75

4-PC. WELDING CLAMP SET

Includes:

- TJZ096 C-Clamp with swivel pad - 6"
- TJZ097 C-Clamp with swivel pad - 11"
- TJZ098 Locking welding clamp - 9"
- TJZ099 Locking sheet metal tool - 8"



Model No.	Promo Price
TLV133	59.95

DEAD BLOW HAMMERS

- 1-piece urethane construction
- Completely enclosed steel shank
 - Shot-filled head
- High-visibility orange colour

aurora tools®



Model No.	Head Wt. oz.	Promo Price
TJZ035	8	11.95
TJZ036	16	12.95
TJZ037	24	13.99
TJZ038	32	15.99

PIN PUNCH

- Ideal for driving out and removing already loosened pins and keys after initial movement by a starting punch
- Manufactured from high quality carbon steel
- Single piece construction with hexagonal shank increases durability
- Accurately hardened for increased service life

TLZ402

aurora tools®



Model No.	Point Diameter"	Stock Size"	Overall Length"	Promo Price
TLZ402	3/32	5/16	4-1/2	3.95
TLZ403	1/8	5/16	4-3/4	3.95
TLZ404	5/32	5/16	5	3.95
TLZ405	3/16	5/16	5-1/4	3.95
TLZ406	1/4	3/8	5-3/4	4.75
TLZ407	5/16	7/16	6	5.95

10-PC. INSULATED TOOL SET

- Voltage Rating: 1000 V
- Meets the VDE insulated quality standard

Included:

- Slotted Screwdriver 7/32" x 5"
- Slotted Screwdriver 5/32" x 4"
- Slotted Screwdriver 3/32" x 3"
- Phillips® Screwdriver #1 x 3-1/8"
- Phillips® Screwdriver #2 x 4"
- Pozidriv® Screwdriver #1 x 3-1/8"
- Pozidriv® Screwdriver #2 x 4"
- Lineman Plier, 6"
- Long Nose Plier, 6"
- Side Cutting Pliers, 6"

aurora tools®



Model No.	Promo Price
TYP305	94.99

3-PIECE BASIC PLIER SET

- Precision milled jaws
- Black nickel finish resists rust
- Meets ANSI standards
- Set includes
 - TJZ078: Slip joint, 6" L
 - TJZ083: Diagonal cutting, 6" L
 - TJZ086: Long nose cut, 6" L

aurora tools®



Model No.	Promo Price
TLZ795	22.25

CUT COMPOUND SNIPS

- Designed for all-purpose cutting applications, for home or professional jobsite
- Latch secures blades for storage
- Rubberized hand grip for quality comfort
- Cutting Capacity: 18-Gauge Steel
- Overall Length: 10-1/4"

UAE007

UAE006

aurora tools®

UAE008

Model No.	Cut Direction	Cut Length"	Colour	Promo Price
UAE006	Left	1-3/8	Red	17.50
UAE007	Right	1-1/8	Green	17.50
UAE008	Straight	1-1/2	Yellow	17.50



BALL PEIN HAMMERS

- High-quality hickory handle
- Forged, new treated head
- Head secured with wood and steel wedges



Model No.	Head Weight	Overall Length"	Promo Price
TV681	8 oz.	12	21.95
TV682	12 oz.	12	22.95
TV683	16 oz.	14	24.95
TV684	24 oz.	16	29.95
TV685	32 oz.	16	34.95

WRENCH SET

- Surface Drive® nearly eliminates fastener rounding
- Exceed ANSI box-end strength requirement
- Forged metal
- Mirror chrome finish
- No. of Pieces: 13
- Size Standard: Imperial
- Type: Combination
- Sizes: 1/4" to 1"



GEARWRENCH

Model No.	MFG No.	Promo Price
TDS803	9312	149.00

TORPEDO LEVEL

- Made with high-impact plastic
- Top-reading feature allows visibility from above
- Tinted 360° vials make reading easy on the eyes
 - Length: 9"
- Material: Plastic
- No. of Vials: 3
 - Magnetic



STANLEY

Model No.	MFG No.	Promo Price
TQ055	42-264	12.95

HEAVY DUTY PUNCH - AUTOMATIC CENTRE

- Point Diameter: 2/25"
- Overall Length: 6"
- Material: Steel



Model No.	MFG No.	Promo Price
TV162	78	49.95

PROFESSIONAL CLAMPS

- Heavy-Duty
- Bessey® Morpad™ allows for greater angle of pivot
- Rail and fixed top jaw are heat treated and tempered
- High quality construction insures long life
 - Clamping Force: 4880 lbs.
 - Throat Depth: 7"



Model No.	MFG No.	Clamping Capacity	Promo Price
TN047	4800S-12	12" (304.8 mm)	349.00
THZ886	4800S-18	18" (457.2 mm)	389.00
TKZ901	4800S-24	24" (609.6 mm)	429.00

MICROMETER TORQUE WRENCHES

- Pliable, elastomer handle grip for superior comfort and oil resistance
- Accurate in clockwise direction +/- 3% in upper 80% of the range
- Micrometer twist lock ring provides secure locking mechanism
- Sealed tear-drop head provides access and strength and keeps out contaminants

GEARWRENCH

TLV412



Model No.	MFG No.	Drive Size"	Torque Range	Promo Price
TLV412	85061	3/8	25 - 250 in.-lbs.	169.00
TLV413	85062	3/8	10 - 100 ft.-lbs.	159.00
TLV414	85066	1/2	30 - 250 ft.-lbs.	169.00

1/4" PNEUMATIC DIE GRINDERS

- Twin bearing spindle
- 1/4"-18 NPT air inlet
- 3/8" hose size

aurora tools®



THZ679



THZ678

Model No.	Description	RPM	HP	Promo Price
THZ678	Mini	25000	0.35	59.99
THZ679	Angle	18000	0.45	75.95

3" AIR CUT-OFF TOOL

- 21000 RPM; 0.45 HP
- 3 CFM
- 1/4"-18 NPT air inlet
- 3/8" hose size

aurora tools®



Model No.	Promo Price
THZ677	56.95

1/4" STUBBY TYPE AIR RATCHET WRENCH

- Air Consumption: 3 CFM
 - Air Inlet: 1/4" NPT
- Sound Level (dBA): 87
 - Drive: 1/4"
- No Load RPM: 230
- Hose Diameter: 5/16" (8 mm)
- Vibration Less Than: 4.4 m/s²
- Torque Range: 5-30 ft.-lbs.
- Overall Length: 7-1/4"

aurora tools®



Model No.	Promo Price
TLZ140	109.00

AIR FLUX CHIPPER & SCALER

- Lightweight compact design permits increased operator efficiency
- Paddle style trigger offers better speed control and precision
- Low noise, low vibration
- Durability and longer life
- Stroke: 1-1/2" (38 mm)
- Hose diameter: 3/8" (9.5 mm)
- Average air consumption: 9 CFM
- Air Inlet: 1/4" - 18 NPT
- Vibration Less Than: 10.2 m/s²



TLZ131



TLZ133

aurora tools®

Model No.	Description	Includes	Promo Price
TLZ133	Chipper	35 mm Flat Chisel	165.00
TLZ131	Scaler	19 Needles	185.00

AIR BLOW GUN WITH BRASS NOZZLE

- Contoured design fits comfortably in operators hand
 - 1/4" (F) - 18 NPT inlet
- Brass tip increases air flow
 - Cushioned thumb lever
 - Air Inlet: 1/4" NPTF
 - Air Consumption: 29 CFM
- Maximum Working Pressure: 120 PSI
 - Tip: Safety

aurora tools®



Model No.	Promo Price
TLV118	9.95

HOSE REELS

- For use with air and water
- Multi-position guide arm for multiple mounting options
- Kinkless, oil resistant high quality hose
- 300 maximum PSI
- Inner Hose Diameter: 3/8"
- Reel Outlet: 1/4" NPTM

aurora tools®



TLZ483

Model No.	Hose Length'	Promo Price
TLZ483	25	169.00
TLZ484	35	210.00
TLZ485	50	279.00

SILVER DEPRESSED CENTRE GRINDING WHEELS

- Ceramic grinding wheel that is designed to grind quickly through all types of metals
- Optimized for use on carbon steel and stainless steel
- 3M™ Precision-Shaped Ceramic Grain grinds fast and cool
- No plowing • Thickness: 1/4"
- Arbor Size: 7/8"
- Type: 27



Model No.	MFG No.	Dia."	Max. RPM	Promo Price
NV212	AB87453	4-1/2	13300	3.15
NV213	AB87454	5	12250	3.35

CUBITRON™ II FLAP DISCS 967A

- Ideal for a wide range of low to medium-high pressure applications
 - Used for paint prep and stainless steel fabrication where finish and gouge resistance are important
 - Safe on stainless steel, carbon steel, aluminum and non-ferrous metals
 - Grinding aid helps keep product cool on heat-sensitive metals
 - Arbor Size: 7/8"
 - Abrasive Material: Ceramic
 - Type: 27



Model No.	MFG No.	Grit	Dia."	Max. RPM	Promo Price
NU325	AB55605	40+	4-1/2	13300	5.99
NU326	AB55606	60+	4-1/2	13300	5.99
NU327	AB55607	80+	4-1/2	13300	5.99
NU345	AB86715	40+	5	12000	6.59
NU348	AB86718	60+	5	12000	6.59
NU349	AB86719	80+	5	12000	6.59

MECHANICS LENGTH JOBBER DRILL 135° - 1/16" TO 1/2" BY 1/64"

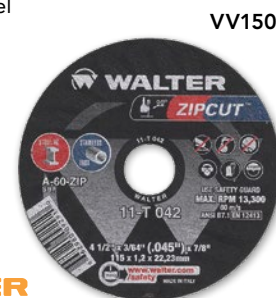
- Includes 29 mechanics length drills, from 1/16" to 1/2" by 1/64"
 - Features 3 flats on the shank
 - Split point makes for easier penetration
 - Case Included
 - No. of Pieces: 29
 - Material: High Speed Steel
 - Point Angle: 135°
 - Finish: Black/Bronze Oxide
 - Manufacturer Series: 321MDSET29
 - Cutting Direction: Right Hand
 - Drill Grade: Heavy-Duty



Model No.	MFG No.	Promo Price
TCP824	46481073	119.00

ZIPCUT™ RIGHT ANGLE GRINDER REINFORCED CUT-OFF WHEELS

- Cut faster, freer and cooler, requiring less power than standard thin cut-off wheel
- Heavily reinforced for extra safety and very flexible and resilient to resist twisting and bending
- Zipcut™ with integrated rib design
- Raised ribs reduces friction surface
- Arbor Size: 7/8"
- Type 1
- Thickness: 3/64"
- Grade: A-60-ZIP



Model No.	MFG No.	Dia."	Max. RPM	Promo Price
VV150	11T042	4-1/2	13300	3.95
VV151	11T052	5	12200	4.65

CHOPCUT™ CHOP SAW CUT-OFF WHEELS

- These wheels have been specifically developed for use on portable abrasive chop saws
- They put minimum load on the motor and are therefore easy on the operator as well as on the saw
- General purpose: The wheel of choice for solids; fast cutting rate with long wheel life
- High performance: The wheel of choice for tubing and extrusions; optimized for use on low power chop saws - reduces load on machine and creates less burr
- Arbor Size: 1"
- Type: 1
- Grade: A-30-HC+



Model No.	MFG No.	Dia."	Thickness"	Max. RPM	Promo Price
VV161	10Q143	14	3/32	4400	11.85
VV162	10Q163	16	7/64	3800	22.95

JOBBER LENGTH HIGH SPEED STEEL DRILL SET

- 29-piece set
 - 1/16" to 1/2" by 64ths
- Industrial duty, fractional sets
 - Right hand 135° split point eliminates walking
- General purpose used on steels, cast iron, and most non-ferrous metals
- 2-tone black oxide and bronze finish provides ideal chip flow and resistance to abrasion
 - Includes steel case



Model No.	MFG No.	Promo Price
WJ188	DR06228	169.00

D3 CITRUS DEGREASER

- Natural citrus degreaser attacks oil, grime, grease, tar and other oil based contaminants on hard surface
- Works on contact and leaves little or no residue
- Non chlorinated
- Format: 15 fl. oz.
- Container Type: Aerosol Can
- Sold per case of 12



Model No.	MFG No.	Promo Price
JN557	SW286	9.08/Can

PLASTIC CLEANER

- Formulated for use on many surfaces including acrylics, Plexiglas, glass, polycarbonates, chrome, Formica, porcelain, fiberglass, and marble
- Reduces glare, repels finger smudges, dirt and dust
- Anti-static, anti-fog, fast-drying, non-streaking
- Contains no chemicals or abrasives that will cause damage to any transparent surface
- Format: 19 fl. oz.
- Container Type: Aerosol Can
- Sold per case of 12



Model No.	MFG No.	Promo Price
JN579	SW848	5.55/Can

MP METAL PARTS PROTECTOR

- Seals Metal Parts Against Corrosion and Rust
- Non-Tacky
- Effective from -40°F to +175°F
- Easily Removed with Safety Solvent
- Highly Resistant to Salt Spray and Harsh Weather
- Non-Chlorinated, ozone safe
- Format: 14 fl. oz.
- Container Type: Aerosol Can
- Sold per case of 12



Model No.	MFG No.	Promo Price
JN568	SW478	9.92/Can

CD887 COIL & FIN CLEANER

- Water-based, foaming coil cleaner
- Foaming and penetrating action
- Non-flammable and non-corrosive
- Safe on all types of metal
- Container Type: Aerosol Can
- Net Volume: 18 oz.
- Container Size: 20 oz.



Model No.	MFG No.	Promo Price
AD056	SC0887000	6.75

SECURITY CHECK PAINT MARKERS

- Dry to touch in 15 minutes
 - Full cure in 4 days
 - Each tube packed with extended plastic tip
- Container Size: 1.7 oz.
- Marking Range: -20°C to 70°C
 - Marking Temp Resistance: 200°C



KP859



Model No.	MFG No.	Colour	Promo Price
KP859	096671	Blue	5.85
KP860	096672	Green	5.85
KP862	096674	Orange	5.85

FREEZE SPRAY

- Aerosol coolant system that instantly freezes surfaces to -60°F, dissipating heat and cooling equipment
- Assists in locating thermal intermittent components, failures and shorts
- Safe to use on sensitive components and all surfaces finishes
- Appearance: Clear Colourless Liquefied Gas
- Plastic Safe: Yes
- Flashpoint: None
- Evaporation Rate: Very Fast
- Net Volume: 355 ml
- Format: 284 g.
- Container Type: Aerosol Can



Model No.	MFG No.	Promo Price
AE971	74086	21.50

PORTABLE OPEN COIL HEATER

- Two heat settings (1500 W and 1000 W)
- Provides full comfort and efficient operation
- Fully adjustable automatic thermostat
- Safety overload switch
- Power signal light
- Top mounted handle and controls
- Grounded plug and controls
- Type: Radiant Heat
- Min. BTU Rating: 3410 BTU/H
- Max. BTU Rating: 5200 BTU/H
- Amperage: 8.3/12.5



Model No.	Promo Price
EA469	72.99

PORTABLE FAN FORCED UTILITY HEATER

- Three heat settings provides full comfort and efficient operation
 - 600 W radiant
 - 900 W fan forced
 - 1500 W fan forced and radiant
 - Chrome-plated safety grill
 - Automatic built-in thermostat
 - Ceramic core element
- Tip over safety switch and thermal limit
 - Min. BTU Rating: 2048 BTU/H
 - Max. BTU Rating: 5120 BTU/H
 - Amperage: 5/12.5



Model No.	Promo Price
EA466	129.00

FAN FORCED CONTRACTOR HEATERS

- Built-in thermostat
- Safety high temperature limit
- Built-in handle/cord storage
- Permanently lubricated motor
- 6' heavy-duty cord
- Steel spiral fan brazed to metal sheath elements for maximum heat transfer
- Voltage: 240
- Plug Type: #6-30P

EB100



EA477



Model No.	Motor Type	BTU/H Rating	Amperage	Wattage	Promo Price
EA477	Open	19100	23.34	5600	229.00
EB100	Closed	16380	20	4800	169.00

HEAVY-DUTY TILTED HEATER

- Industrial finger proof steel intake/discharge grills
- Durable metal construction with enclosed motor
 - One-speed fan only function
 - Built-in over heating protection
- Air flow direction adjustable from 10°-50°
 - Adjustable thermostat
 - Energy-saving
 - Convenient carrying handle
 - Forced-air heater function
 - Safety shutoff function
- Max. BTU Rating: 19107 BTU/H
 - Max. Temperature: 100°F
 - Type: Ceramic
- Voltage: 240 • Amperage: 23.3
- Wattage: 5600 • Cord Length: 6'



Model No.	Promo Price
EB021	259.00

HEAVY-DUTY CEILING MOUNT HEATERS

- Built-in ceiling bracket for easy mounting
- Automatic fan delay
- Rugged heavy-duty industrial heater
- Ideal for use in storage rooms, workshops, garages, warehousing
- Type: Ceiling Mount
- Plug Type: Hardwire
- Voltage: 240
- Amperage: 10.41/20.83
- 10-5/8" W x 12-1/2" D x 14" H

EA532



Model No.	Motor Type	Min. BTU/H Rating	Max. BTU/H Rating	Promo Price
EA532	Open	8530	17060	235.00
EA652	Closed	8530	25600	399.00

PORTABLE CERAMIC HEATER

- Two heat settings (1500 W and 900 W) provide full comfort and efficient operation
- Adjustable thermostat
- Big carry handle
- Adjustable vertical tilt angle
- Min. BTU/H Rating: 2560 BTU/H
- Max. BTU/H Rating: 5200 BTU/H
- Voltage: 120



Model No.	Promo Price
EA650	72.99

PORTABLE INFRARED HEATER

- Provides instant sun-like heat that directly warms objects
- Adjustable thermostat
- Cool touch flame-resistant plastic housing
- Overheat and tip over shut-off
- Type: Radiant Heat
- Min. BTU/H Rating: 2560 BTU/H
- Max. BTU/H Rating: 5120 BTU/H
- Amperage: 12.5
- Voltage: 120
- Wattage: 750/1500
- Overall Dim.: 23" H x 13" W x 9.3" D



Model No.	Promo Price
EB184	75.99

PORTABLE SALAMANDER HEATER

- Manufactured for long lasting, this portable heater for warehouses, factories, garages, construction sites, pavilions and other open areas, raise temperature to the desired level gradually for worksite comfort
- Adjustable thermostat • Adjustable tilt angle
- Mounted on 10" solid rubber wheels
- Over heat protection
- Easy to move to different areas of the site
- Variable speed setting, fan forced
- Max. BTU Rating: 34121 BTU/H
- Fan Motor Type: Enclosed air over, Ball bearing
- Type: Contractor • Voltage: 240
- Wattage: 10080



Model No.	Promo Price
EA786	1250.00

GRAIN COWHIDE FITTERS ACRYLIC BOA-LINED GLOVES

- Provides superior warmth
- Superior abrasion resistance
- Excellent comfort and durability
- Resists oil and water well
- Full leather-tipped fingers and knuckle strap
- Rubberized safety cuff



Model No.	Size	Promo Price
STANDARD QUALITY		
SEI681*	Large	5.30/Pair
PREMIUM QUALITY		
SAO053	Large	7.05/Pair
SDL882	X-Large	7.55/Pair
SDL883	2X-Large	8.05/Pair

* Patch Palm

OSCILLATING HEATERS

- Built-in over heating protection, tip over switch and power indicator light
- Adjustable thermostat
- 2 heat settings (750 W and 1500 W) provide maximum comfort
- Includes fan only setting
- Equipped with an oscillation feature
- Volts: 120
- Type: Ceramic
- Max. BTU Rating: 5120 BTU/H



EB020



EB019

Model No.	W"	x	Dim. D"	x	H"	Promo Price
EB019	6.7	x	5	x	9.6	67.99
EB020	7.4	x	6.9	x	18.5	78.99

SPLIT COWHIDE FITTERS ACRYLIC BOA-LINED GLOVES

- Premium quality
- Provides superior warmth
- Good abrasion resistance
- Full leather tipped fingers and knuckle strap provides increased protection
- Rubberized safety cuff



Model No.	Size	Promo Price
SD614	Large	4.60/Pair
SAP247	X-Large	4.85/Pair
SDL890	2X-Large	5.15/Pair



PREMIUM QUALITY GRAIN PIGSKIN FOAM FLEECE LINED GLOVES

- Fitter glove with shorter driver style cuff
- Premium quality pigskin leather construction
- Superior performance in wet applications
- Good abrasion resistance
- Full leather tipped fingers and knuckle strap
- Full red foam fleece lining provides excellent warmth



Model No.	Size	Promo Price
SDL465	Small	7.15/Pair
SDL021	Medium	7.25/Pair
SDS860	Large	7.30/Pair
SDS861	X-Large	7.50/Pair
SDN053	2X-Large	7.60/Pair



Pricing in effect until December 31, 2021 or while quantities last. Taxes and freight extra. Issue #SDW221102NA

Due to recent commodity and market volatility, prices are subject to change, and may vary without prior notice.