



Strength

Simply better.

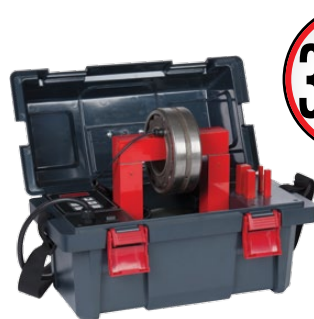
Distributed by:



Équipements Industriels Joliette inc.
1295, De Lanaudière
Joliette, Qc J8E 3N9
Tél.: 450 756 0564
800 567 5847
Fax : 450 756 6859
info@eij.ca
www.eij.ca

Induction bearing heaters

- Portable, 120V/15A, 50/60Hz
- Extend bearing life and cut operating cost by eliminating hammering and pounding to cold-mount bearings. Works on bearings, sprockets, gears, couplings & sleeves.
- Digital time/temperature display & magnetic probe.
- Vertical or Horizontal heating (PVH3813 & SVH5223). Horizontal position heating time is 3 to 4 times faster!
- Demagnetizes bearings automatically – easy to use, ready in minutes.



FROM **3641⁹¹**

PV2412

- Integrated carrying case
- Includes cross bars standard: ¼", ¾", 1 ¼", 1 ¾"
- Approx. weight: 47 lbs.

Max. weight ± lb bearings	Min. ID Ø	Max. OD Ø	Price
44 lbs	¾"	9 ½"	\$3641.91



PVH3813

- Vertical or horizontal heating.
- Includes cross bars standard: ¼", ¾", 1 ¼", 1 ¾", 2 ¼"
- Approx. weight: 51 lbs.

Max. weight ± lb bearings	Min. ID Ø	Max. OD Ø	Price
110 lbs	¾" Ø 3 7/8"	15"	\$4754.54



SVH5223

- Swivel arm for faster change ups.
- Vertical or horizontal heating.
- Includes cross bars standard: ¾", 1 ¾", 2 ¾"
- Approx. weight: 112 lbs.

Max. weight ± lb bearings	Min. ID Ø	Max. OD Ø	Price
330 lbs	5/8" Ø 4 3/4"	20 ½"	\$7361.44

*Bearings not included



Angle clamps, WSM

- For a wide range of applications, especially 90° welding
- Accepts work pieces of different thicknesses
- Open work area for passage of t-joints
- Stable, solid cast-iron with wide bases and broad hold-down areas

FROM **184⁵⁰**



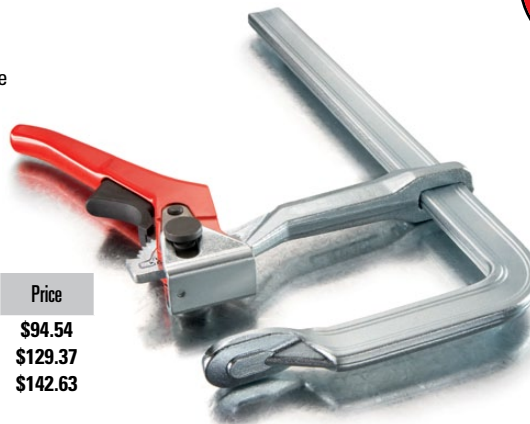
	Capacity for both sides	Jaw Height	Max. Passage for Mitres	Price
WSM-9	7"	1 ¾"	3 ½"	\$184.50
WSM-12	9 ½"	2 ¾"	4 ¾"	\$266.43

All-Steel, Rapid-Action Lever Bar Clamps

- Quick – up to 5 times faster than regular clamps!
- Patented rail profile
- Secure, unaffected by vibrations
- Strong – high clamping force
- Secure ratchet mechanism
- Forged sliding arm
- Non-slip trigger release
- Extremely sturdy
- Ergonomic handle



	Clamping Capacity	Throat Depth	Clamping Force	Price
LC8	8"	4"	660 lbs	\$94.54
LC12	12"	5 ½"	1200 lbs	\$129.37
LC20	20"	4 ¾"	1200 lbs	\$142.63



FROM **94⁵⁴**

Newsletter & Offers...

Sign up for news & exclusive offers from BESSEY® by emailing your request to info@besseytools.com

Join us on...

- facebook.com/BesseyToolsNorthAmerica
- instagram.com/besseytools_na/
- twitter.com/BesseyTools
- youtube.com/user/BesseyTools
- besseytools.com



classiX® All-Steel Bar Clamps

- Standard swivel pads & heavy duty pads are true contact surfaces for classiX®. Field replaceable.
- Heat-treated, high carbon Acme threaded hardened spindle is built to offer high load capacity, durability & spatter resistance.



classiX® - Standard pad

	Clamping Capacity	Throat Depth	Clamping Force	Price
GS30K	12"	5 1/2"	1200 lbs	\$48.73

48⁷³



classiX® - Heavy duty pad

- Designed for heavier applications
- Includes classic rail profiles

	Clamping Capacity	Throat Depth	Clamping Force	Price
GSL30	12"	4 3/4"	1880 lbs	\$76.10
GSL60	24"	4 3/4"	1880 lbs	\$87.79
GSM30	12"	5 1/2"	2660 lbs	\$93.51
GSM40	16"	5 1/2"	2660 lbs	\$106.38
GSM50	20"	5 1/2"	2660 lbs	\$120.61
GSM60	24"	5 1/2"	2660 lbs	\$136.87

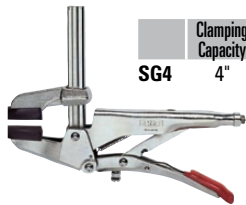
FROM **76¹⁰**



66⁷²

SuperGrips™ with profiled rail, SG

- Grip plier + clamp in one. Quick adjustment – fast & easy set-up
- Lock into place – the clamp holds while you work
- Adjustable top handle adjusts clamping force
- Adjustable bottom handle adjusts jaw angle (up to 7°) for clamping tapered parts
- Sturdy cold drawn, profiled steel rail

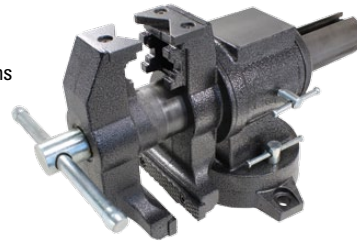


	Clamping Capacity	Throat Depth	Clamping Force	Price
SG4	4"	2 1/2"	440 lbs	\$66.72

Vises

Multi-purpose rotating pipe & bench vise

- Heavy duty jaws
- 360° swivel base
- 3 mounting holes and 2 lockdowns
- Serrated jaws rotate 360°
- Ductile iron body for durability
- Built-in anvil.



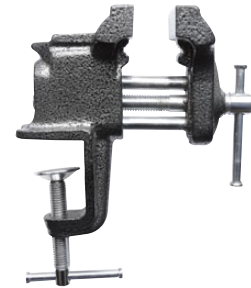
136⁶⁹



	Jaw Width	Jaw Opening	Throat Depth	Pipe Capacity	Price
BV-MPV5	5"	5"	3"	2"	\$136.69

Light duty clamp-on vise

- Portable
- For light duty work
- Attaches to surfaces up to 1.5" thick.
- Cast in pipe jaws
- Serrated jaw faces
- Double steel guide bars



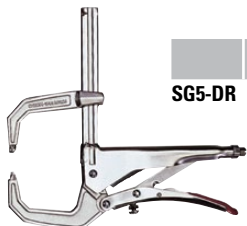
29⁹⁶

	Jaw Width	Jaw Opening	Throat Depth	Pipe Capacity	Price
BV-C030	3"	3"	1 1/2"	3/4"	\$26.96

SuperGrips™ deep reach clamp

- Deep reach jaws can easily clamp over angle iron, channel iron and other obstacles.

85⁷⁸



	Clamping Capacity	Throat Depth	Clamping Force	Price
SG5-DR	4 1/2"	3"	310 lbs	\$85.78

C-clamps heavy service, HS series



- Fully closing.
- The toughest of C-clamps.
- Square head on the spindle.
- Other sizes available.

	Clamping Capacity	Throat Depth	Clamping Force	Price
B-HS2	0-2 3/8"	1 7/8"	12,500 lbs	\$86.33
B-HS4	0-4 1/2"	2 3/4"	20,000 lbs	\$191.44
B-HS6	0-6 3/8"	3 3/8"	27,500 lbs	\$260.83

FROM **86³³**

Also available: B-HS0, B-HS1, B-HS1.5, B-HS3, B-HS5, B-HS8, B-HS10, B-HS12



Malleable cast bar clamps

Deep reach CDS, with flat rail

- Need extra reach? Throat depth up to 20"
- Large flat rail is serrated to prevent slipping.
- Includes flat rail profile, standard pad, and plastic cap.

	Clamping Capacity	Throat Depth	Clamping Force	Price
CDS24-10 WP	24"	10"	1550 lbs	\$148.73
CDS24-12 WP	24"	12"	1550 lbs	\$171.20
CDS24-20 WP	24"	20"	990 lbs	\$256.81



Seaming tools, PS

- Precision, professional tool.
- Large diameter Acme type lead screw.
- Twin vacuum cups secure PS to any smooth, non-porous material or solid surface.
- Guide rails for support.



PS55

- Levelling toggles ensure smooth surface joint, reduce grinding, sanding and finishing.
- Ergonomic wooden handle.

265⁰⁵

	Clamping Capacity	Cup Diameter	Clamping Force	Price
PS55	2 1/4"	4 3/4"	48 lbs	\$265.05

Extra large PS130

- Vacuum operating button activates & locks vacuum seal on the work surface.
- 2K composite handle with comfort insert.
- Cup diameter 8 1/4".

613⁵⁹

	Clamping Capacity	Clamping Force	Price
PS130	3 1/8"	265 lbs	\$613.59



Safety strap cutter, D123

114³²

- Holds banding tightly to prevent the banding from springing up during cutting
- Cuts steel straps up to 32 x 1 mm (1 1/4" x 1/32") with one hand
- Ergonomic handle and compound leverage for comfort.



	Overall Length	Blade Length	Price
D123S-SB	10 1/4"	1 1/2"	\$114.32

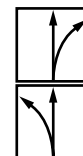


The latest generation of leverage snips

Multi-use aviation snip, D39ASS

- Innovative new snips feature more capacity, precision and comfort with easier operation.
- Easier to hold – optimised handle angle for a full unit comfort-grip for maximum cutting force.
- Smooth cutting action – joint area with sintered steel insert greatly reduces friction, extending tool life.
- Central latch for easy operation, without a change in grip.
- Compact forged jaws permit high-precision cutting.
- Available in right or left cutting versions.

	Overall Length	Blade Length	Cutting Capacity (carbon steel)	Price
D39ASS-SB	9"	1 3/16"	18 gauge	\$50.16
D39ASSL-SB	9"	1 3/16"	18 gauge	\$50.16





Strength

Distributed by:

Simply better.

K Body® REVO™ REVOLUTION

The best parallel clamp in the world just got better!

We listened and built in the features you wanted.

Vario K Body® REVolution, KREV Clamping System

- BESSEY Vario has all the same great features as the K Body REVolution ... PLUS ... the "fixed" jaw can move along the bar for a whole range of game-changing applications.
- Powerful 90 degree, no-slip clamping rated at a nominal 1700 lbs of everyday clamping force.
- Quick and easy set up for clamping or spreading without additional tools.
- Ideal for precision cabinetry, heavy duty laminations and robust clamping.

	Clamping Capacity	Throat Depth	Clamping Force	Spreading Capacity	Price
KREV40	40"	3 3/4"	1700 lbs	10 1/2" - 44"	\$89.60
KREV60	60"	3 3/4"	1700 lbs	10 1/2" - 63"	\$101.98
KREV78	78"	3 3/4"	1700 lbs	10 1/2" - 81"	\$122.96
KREV98	98"	3 3/4"	1700 lbs	10 1/2" - 101"	\$129.63



FROM **89⁶⁰**

MORE than a clamp...

part of a comprehensive clamping concept made even more versatile with these innovative accessories.

K Body extender KBX20

- Easy-to-use extender made of sturdy aluminum
- Clamping width can be increased by joining two clamps. 2/set. For all K Body REVO versions.



21²³

Variable jaw KRE-VO

- Suitable for all BESSEY K Body REVO parallel clamps KREV, KRE, KRV and KR. Add an extra one for multiple set-ups.



27⁵³

Sliding jaw, KRE-J2K

- Suitable for all BESSEY K Body REVO parallel clamps KREV, KRE, KRV and KR. Add an extra jaw for multiple glue ups.



44⁷²

GREAT PRICING ON ONE HANDED CLAMPS!



FROM **24¹⁷**

One-hand EZS clamping & spreading

- Single-hand clamping and spreading of workpieces.
- Intelligent release mechanism quickly converts from clamping to spreading without tools.
- Ergonomic handle positioned behind the rail, for a powerful grip.
- Throat depth to the very edge – power spread across the entire pad.

	Clamping Capacity	Throat Depth	Clamping Force	Spreading Capacity	Price
EZS30-8	12"	3 1/2"	445 lbs	6 1/2" - 20"	\$24.17
EZS45-8	18"	3 1/2"	445 lbs	6 1/2" - 25 3/4"	\$27.89



FROM **24¹⁴**

DuoKlamp® large surface one hand clamp

- Clamp or spread with the turn of a button, no tools required with the intelligent release mechanism.
- Jaws resist flex and can withstand up to 260 lbs of clamping force.
- Soft pressure caps slide off easily and prevent marring of wood by distributing pressure over a greater area.

	Clamping Capacity	Throat Depth	Clamping Force	Spreading Capacity	Price
DUO30-8	12"	3 1/4"	260 lbs	2 3/4" - 14 3/4"	\$24.14
DUO45-8	18"	3 1/4"	260 lbs	2 3/4" - 21"	\$27.77



Newsletter & Offers...

Sign up for news & exclusive offers from BESSEY® by emailing your request to info@besseytools.com

Join us on...

- facebook.com/BesseyToolsNorthAmerica
- instagram.com/besseytools_na/
- twitter.com/BesseyTools
- youtube.com/user/BesseyTools
- besseytools.com

